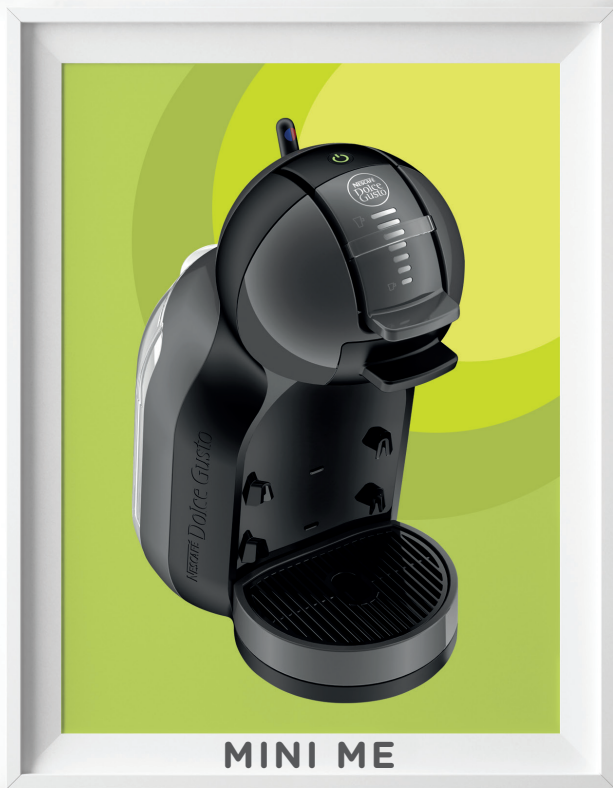




EN Read Safety Precaution booklet before first use.  
FR Lisez le manuel des consignes de sécurité avant la première utilisation.  
ES Leer el folleto de precauciones de seguridad antes del primer uso.  
PT Ler o folheto de recomendações de segurança antes da primeira utilização



MINI ME

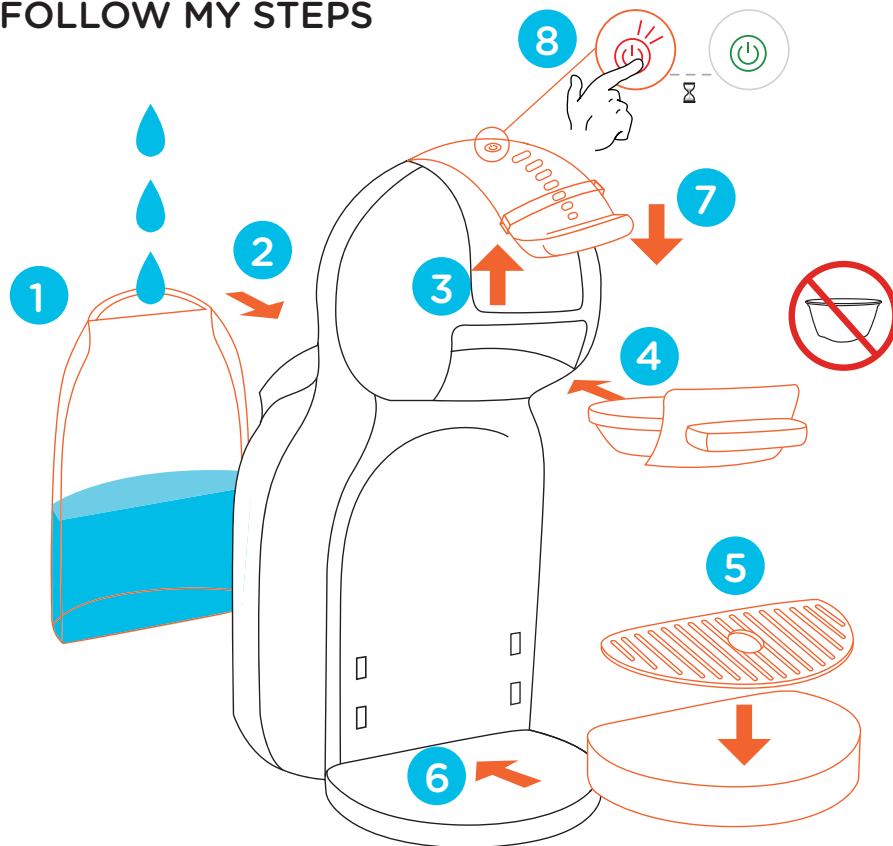
GET ME STARTED

YouTube NESCAFÉ DOLCE GUSTO WORLDWIDE CHANNEL

FR COMMENÇONS! ES ¡EMPECEMOS! PT VAMOS COMEÇAR!



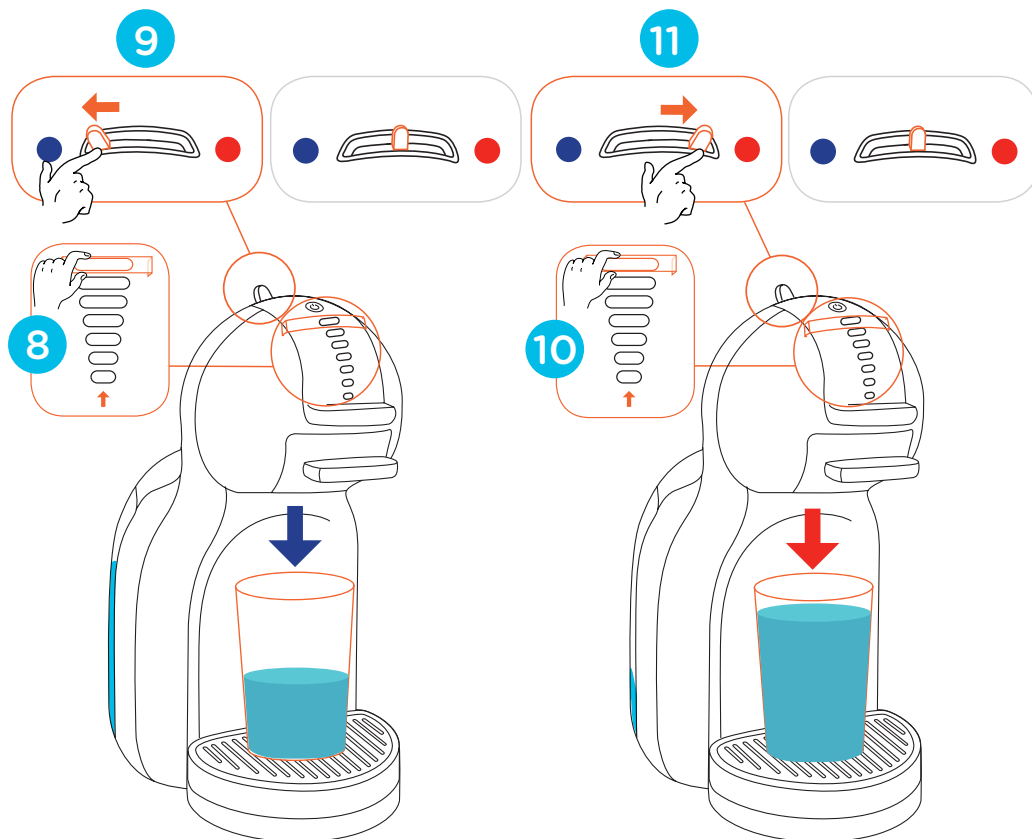
## FOLLOW MY STEPS



FR Respectez l'ordre des opérations ES Siga mis indicaciones

PT Siga os meus passos

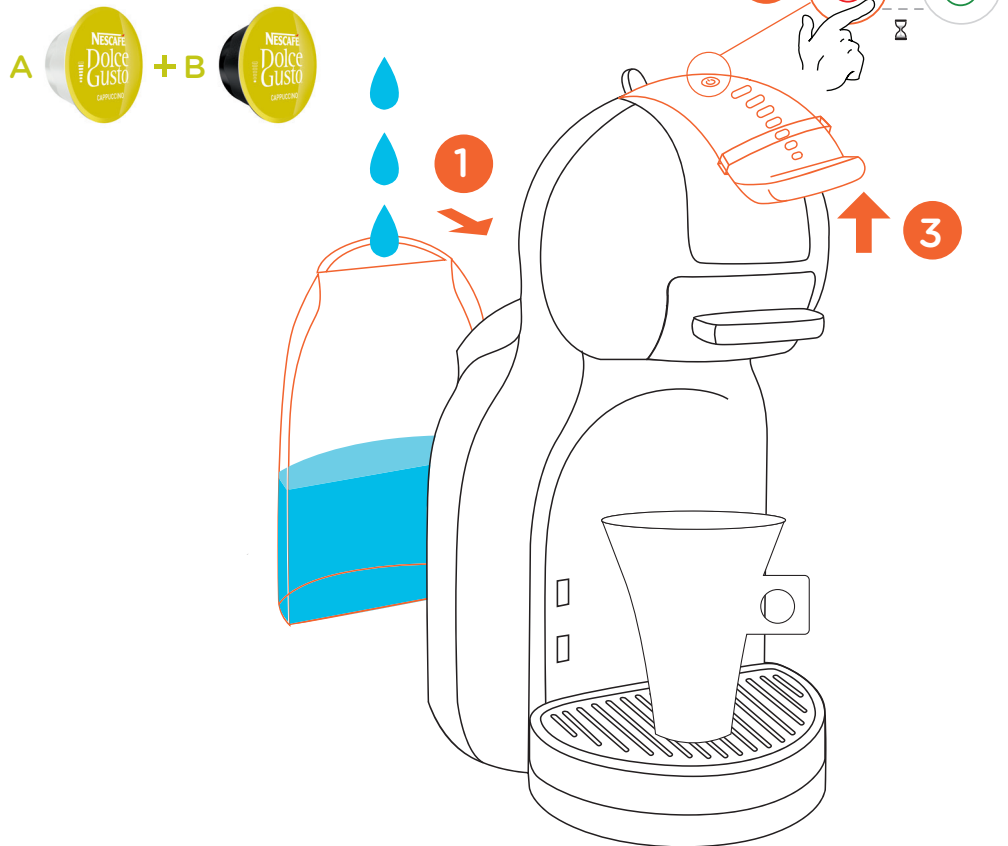
# AND CLEAN ME FIRST



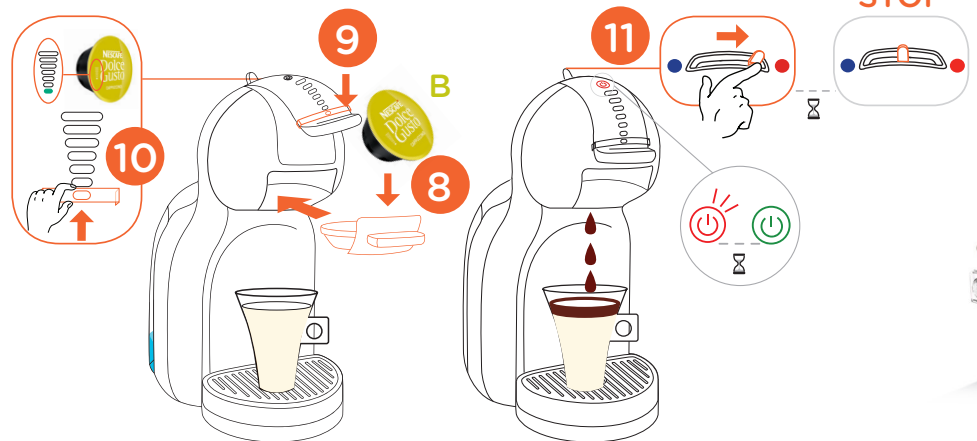
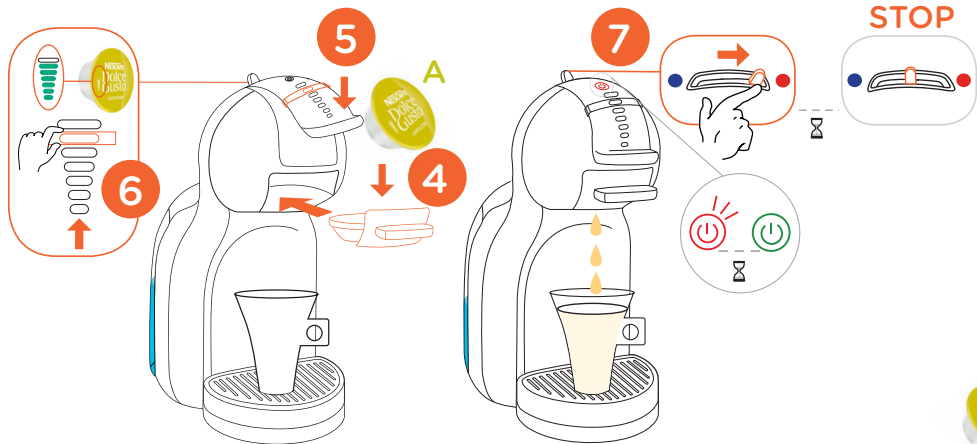
FR Nettoyez-moi d'abord ES Y límpieme primero  
PT E limpe-me primeiro



## LET ME SERVE YOU

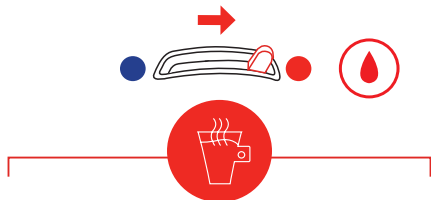


FR Laissez-moi vous servir ES Déjeme servirle PT Deixe que eu te sirva

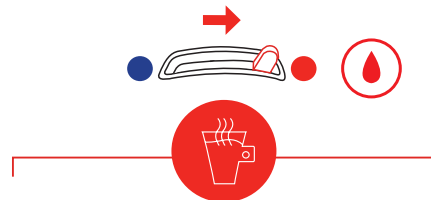




## LET ME SHOW YOU



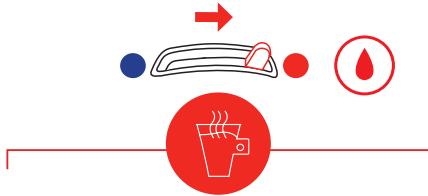
**ESPRESSO**



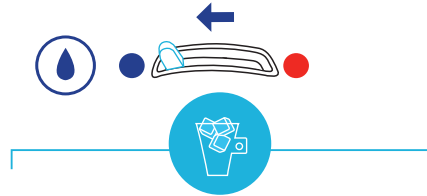
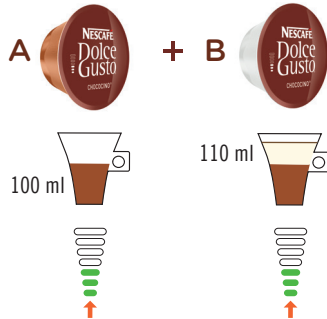
**CAPPUCCINO**



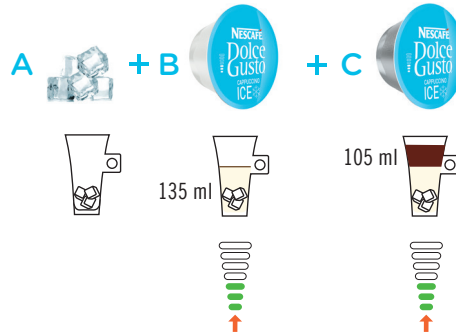
FR Laissez-moi vous montrer ES Déjeme mostrarle PT Deixe que eu te mostre



## CHOCOCINO

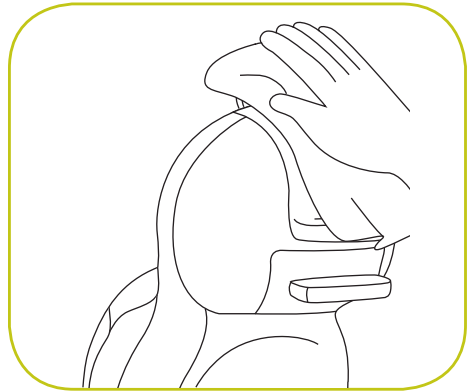
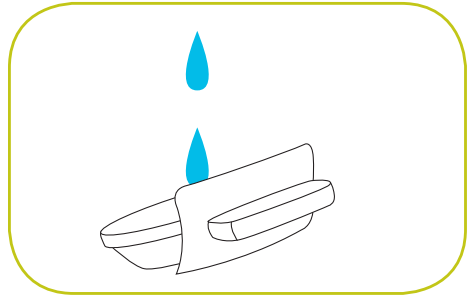
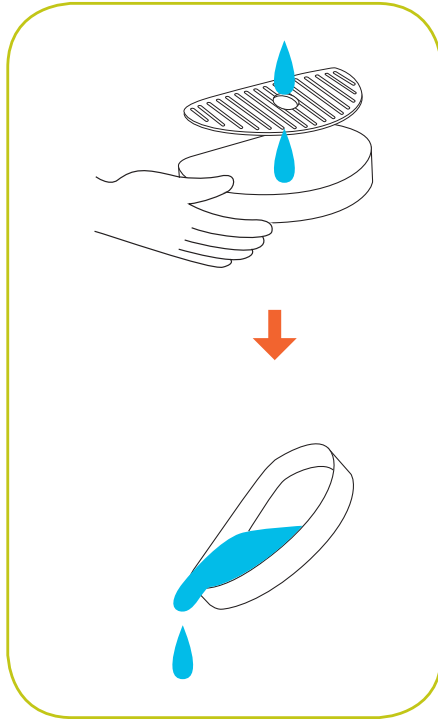


## CAPPUCCINO ICE





# TAKE CARE OF ME



FR Prenez soin de moi ES Cuideme PT Cuide de mim





↓

**DESCALING KIT\***



[WWW.DOLCE-GUSTO.COM](http://WWW.DOLCE-GUSTO.COM)



↓

**USER MANUAL\*\***



[WWW.DOLCE-GUSTO.COM](http://WWW.DOLCE-GUSTO.COM)

\* FR Kit de détartrage ES Kit de descalcificación PT Kit de descalcificação

\*\* FR Mode d'emploi ES Manual de usuario PT Manual do usuário



# DISCOVER THE WHOLE FAMILY

ESPRESSO  
CARAMEL



LUNGO



MARRAKECH  
TEA



GRANDE  
MILD



LATTE  
MACCHIATO



ESPRESSO  
BARISTA



MOCHA



CAFÉ  
AU LAIT



[www.dolce-gusto.com](http://www.dolce-gusto.com)

FR Découvrez toute la gamme ES Descubra la familia al completo. Alternativas de producto sujeto a la disponibilidad en cada país. PT Descubra a familia toda



# HOTLINES



<b>AE</b> 800 348786, 8008 971 971	<b>FI</b> 0800 0 6161	<b>LU</b> 8002 3183	<b>QA</b> +97148100081
<b>AL</b> 0842 640 10	<b>FR</b> 0 800 97 07 80	<b>LT</b> 8 700 55 200	<b>RO</b> 0 800 8 637 853
<b>AR</b> 0800 999 81 00	<b>GB</b> 0800 707 6066	<b>LV</b> 67508056	<b>RU</b> 8-800-700-79-79
<b>AT</b> 0800 365 23 48	<b>ROI:</b> 00800 6378 5385	<b>MA</b> 080 100 52 54	<b>SA</b> 8008 971 971
<b>AU</b> 1800 466 975	<b>GR</b> 800 11 68068	<b>ME</b> 020 269 902	<b>SE</b> 020-29 93 00
<b>BA</b> 0800 202 42	<b>GT</b> 1-800-299-0019	<b>Middle East:</b> +971 4 8100000	<b>SG</b> 1 800 836 7009
<b>BE</b> 0800 93217	<b>HK</b> 2179 8888	<b>MX</b> 5267 3304, 01800 365 2348	<b>SK</b> 0800 135 135
<b>BG</b> 0 800 1 6666	<b>HN</b> 800-2220-6666	<b>MK</b> 0800 00 200	<b>SL</b> 080 45 05
<b>BR</b> 0800 7762233	<b>HR</b> 0800 600 604	<b>MT</b> 80074114	<b>SR</b> 0800 000 100
<b>CA</b> 1 888 809 9267	<b>HU</b> 06 40 214 200	<b>MY</b> 1800 88 3633	<b>SV</b> 800-6179
<b>CH</b> 0800 86 00 85	<b>ID</b> 001803657121	<b>NI</b> 1-800-4000	<b>TH</b> 1-800-295588, 0-2657-8601
<b>CL</b> 800 4000 22, 800 800 711	<b>IE</b> 00800 6378 5385	<b>NL</b> 0800-3652348	<b>TR</b> 0800 211 02 18, 4 44 31 60
<b>CO</b> 01800-05-15566	<b>IT</b> 800365234	<b>NO</b> 800 80 730	<b>TW</b> 0800-000-338
<b>CN</b> 400 630 4868	<b>JO</b> +962-6590 2998	<b>NZ</b> 0800 365 234	<b>UA</b> 0 800 50 30 10
<b>CR</b> 0800-507-4000	<b>JP</b> (machines) 81-35651-6848 (capsules) 81-35651-6847	<b>PA</b> 800-0000	<b>US</b> 1-800-745-3391
<b>CZ</b> 800 135 135	<b>KR</b> 080-234-0070	<b>PE</b> 80010210	<b>UY</b> 0800-2122
<b>DE</b> 0800 365 23 48	<b>KG</b> 0842 640 10	<b>PH</b> 898-0061	<b>VI</b> 1800 6699
<b>DK</b> 35460100	<b>KW</b> +97148100081	<b>PL</b> 0800 174 902	<b>ZA</b> +27 11 514 6116 (toll free) 086 009 6116
<b>EE</b> 6 177 441	<b>KZ</b> 8-800-080-2880	<b>PT</b> 800 200 153	
<b>ES</b> 900 10 21 21	<b>LB</b> +961 4 548595	<b>PY</b> 0800-112121	



**EN** The guarantee does not cover appliances that do not work or do not work properly because they have not been maintained and/or descaled.

**FR** La garantie ne prend pas en compte les machines qui ne fonctionnent plus ou mal, à cause d'une erreur de manipulation et/ou si le détartrage n'a pas été effectué.

**ES** La garantía no cubre los aparatos que no funcionan o no funcionan correctamente porque no han sido mantenidos y/o descalcificados.

**PT** A garantia não cobre os aparelhos que não funcionam ou não funcionam corretamente devido à falta de manutenção e/ou descalcificação.



[www.dolce-gusto.com](http://www.dolce-gusto.com)